



For Lease - Plaza de Timbres



9135 N. Meridian Street, Indianapolis, IN

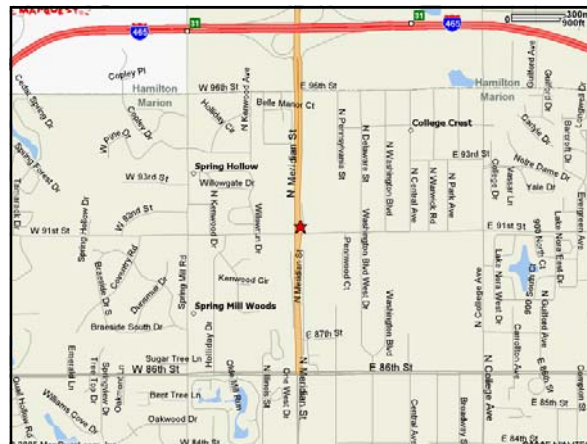
Great Location

Attractive Rental Rates

Individual Entrances

Easy Access to I-465

**Close to Banks, Retail Shops
and Restaurants**



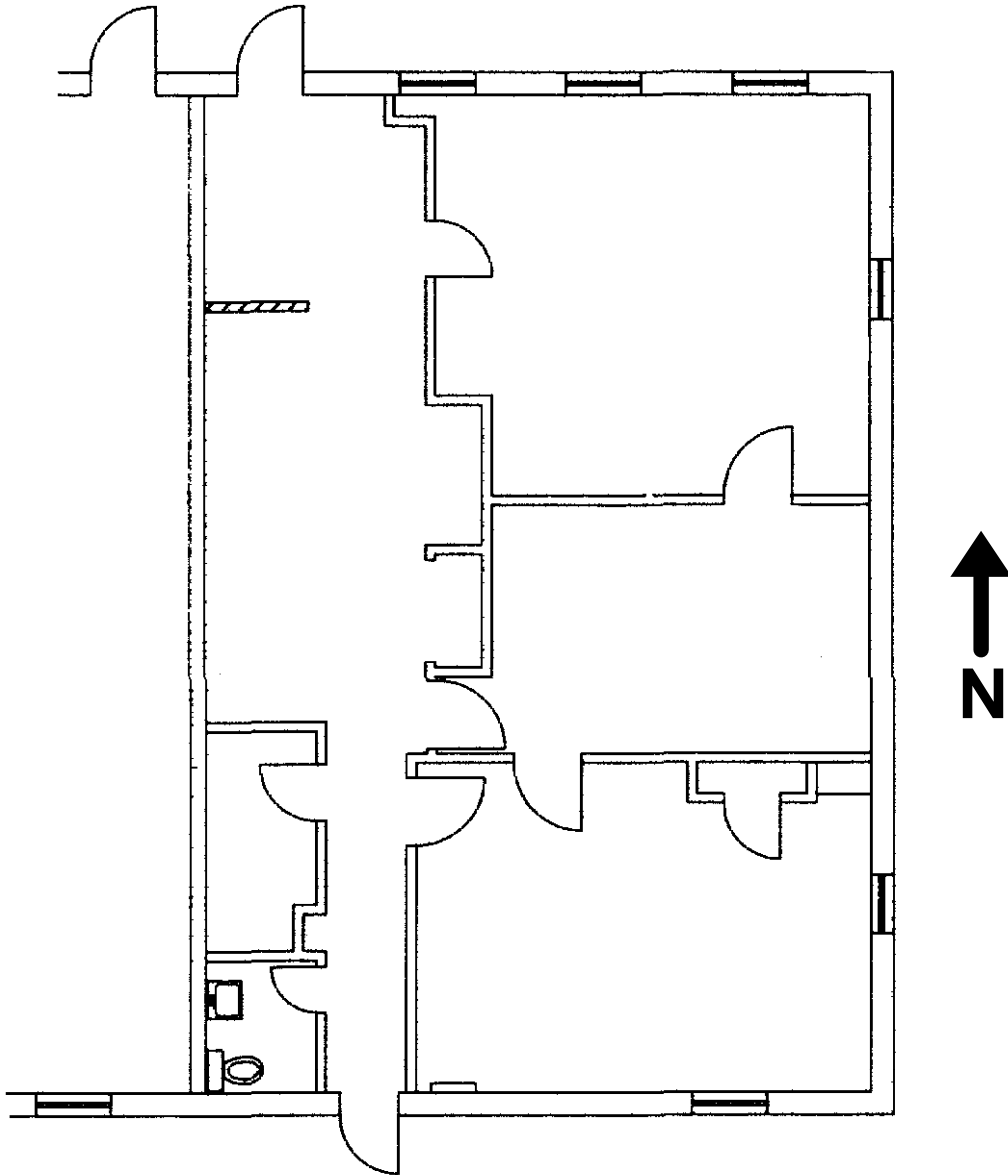
Suite	Available	Square Footage	Rate Per Sq. Ft.
B-9	Immediately	1,340	\$13.00



For Information Contact:
 John Corey
 Levi Investment Realty, Inc.
 9589 Valparaiso Court
 Indianapolis, IN 46268
 317-870-9900
 317-396-0688 Fax
jcorey@levirealty.com

Plaza De Timbres Suite B-9

1,340 sq. ft.



Not to Scale